

# Quest for a Compressed Natural Gas Station in City of Westlake, LA



**South Central Alternative Fuel Corridor Convening: Initiatives**  
**Arlington, TX**  
**Tuesday, April 9, 2019**



## Regional Map

# Geographically Speaking

## Driving Distance to Lake Charles



Baton Rouge: 122 miles

Houston: 140 miles

New Orleans: 218 miles

Austin: 272 miles

Mobile: 320 miles

San Antonio: 341 miles

Destin: 432 miles

# City of Westlake, LA: Heart of Southwest Louisiana's Natural Gas Economic Boom



Economic outlook: Lake Charles continues to be one of fastest growing areas in nation



By Chandler Watkins | September 26, 2018 at 3:34 PM CDT - Updated September 26 at 4:14 PM  
LAKE CHARLES, LA (KPLC) - The Lake Charles area continues to be one of the fastest growing areas in the nation, according to a report released this week by Louisiana State University College of Business Professor Loren Scott.

**Technology:** New techniques and tools unlocking vast quantities of low cost natural gas.

**Southwest Louisiana's Assets:** A confluence of existing pipelines, port, navigable channel, access to I-10 makes the area a regional, national, and global strategic hub for the industry.

- Transformative:**
- \$117 billion in completed, developing, or proposed industrial sites, generating 10s of thousands of temporary construction workers. Permanent workers could average \$80K at plants.
  - Population for Lake Charles Urbanized Area will have increased by 2.5% between 2015 and 2020 to over 200K.
  - Westlake, being adjacent to the I-10 Calcasieu River bridge interchange and still under construction industrial zone, has an ambiguous relationship with the surge, as congestion grows, but city tax coffers also grow, along with new residential developments.



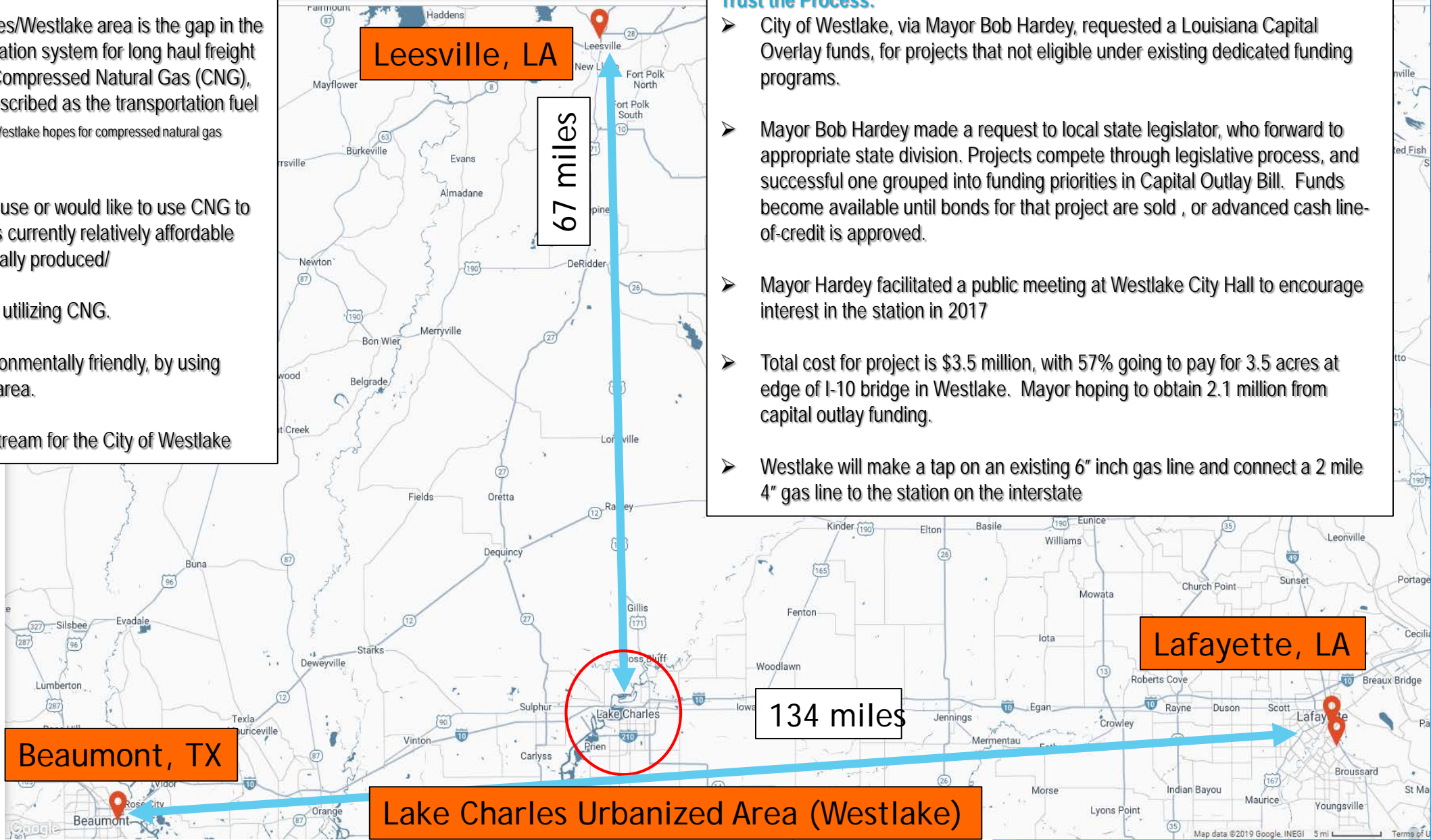
# History and Purpose

## Impetus:

- Recognition that Lake Charles/Westlake area is the gap in the expanded regional transportation system for long haul freight and local trucks, regarding Compressed Natural Gas (CNG), which Mayor Bob Hardey described as the transportation fuel “wave of the future” (12/1/17, “Westlake hopes for compressed natural gas station”, [www.kplctv.com](http://www.kplctv.com)).
- Existing local industries that use or would like to use CNG to stabilize fuel costs, since it is currently relatively affordable clean burning, and domestically produced/
- New public fleets capable of utilizing CNG.
- Also desire to be more environmentally friendly, by using cleaner burning fuels in the area.
- Cited as potential revenue stream for the City of Westlake

## Trust the Process:

- City of Westlake, via Mayor Bob Hardey, requested a Louisiana Capital Overlay funds, for projects that not eligible under existing dedicated funding programs.
- Mayor Bob Hardey made a request to local state legislator, who forward to appropriate state division. Projects compete through legislative process, and successful one grouped into funding priorities in Capital Outlay Bill. Funds become available until bonds for that project are sold , or advanced cash line-of-credit is approved.
- Mayor Hardey facilitated a public meeting at Westlake City Hall to encourage interest in the station in 2017
- Total cost for project is \$3.5 million, with 57% going to pay for 3.5 acres at edge of I-10 bridge in Westlake. Mayor hoping to obtain 2.1 million from capital outlay funding.
- Westlake will make a tap on an existing 6” inch gas line and connect a 2 mile 4” gas line to the station on the interstate



Beaumont, TX

Lake Charles Urbanized Area (Westlake)

Lafayette, LA

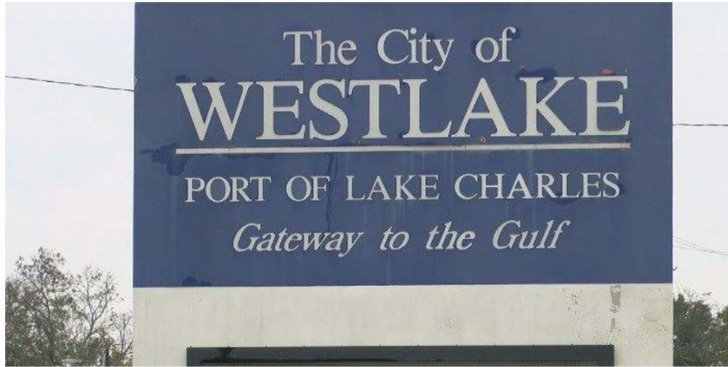
Leesville, LA

67 miles

134 miles

# Partners

## Westlake hopes for compressed natural gas station



December 1, 2017 at 10:07 PM CST - Updated August 14 at 12:05 PM

WESTLAKE, LA (KPLC) - The City of Westlake took its first step in bringing another source of alternative fuel to Southwest Louisiana.

It has requested funding from the state for a fast-fill compressed natural gas (or CNG) station near the I-10 exit in Westlake.

The closest CNG station is in Lafayette or Beaumont, Westlake Mayor Bob Hardy said, adding that a station would be beneficial because of all the traffic that comes through the city.

"There's many 18-wheelers running on the interstate today with compressed natural gas," said Hardy. "It's going to be the wave of the future."

## Partnerships

- City of Westlake
- Local industry and public agencies and local residents
- **EXAMPLES:**
  - Industry** – Currently, Westlake provides gas to 4,000 homes, if Dunham Price Concrete only converted 22 out of 156 trucks it would double the volume of gas sold by the city.
    - Lott Oil company, based in Natchitoches (2 hour drive) is ready to send 7 trucks daily to the station.
  - Public Agencies** – Westlake will convert police cars and public works vehicles once station is built, cutting both fuel and maintenance costs in half.
    - Seeking some partnership with Calcasieu Parish Policy Jury and School Board and their fleets.
- State of Louisiana
- Louisiana Clean Fuels
- Imperial Calcasieu Regional Planning and Development Commission/Lake Charles Metropolitan Planning Organization
  - Advance Program/Southwest Louisiana Air Quality Task Force

# Challenges

## Challenges

- Obtaining full capital outlay funding
- Making sure this is a station with a mix of energy and fuel types
- Getting Calcasieu Parish government, including school buses to convert some of their fleets.
- Future I-10 Calcasieu River Bridge construction.